



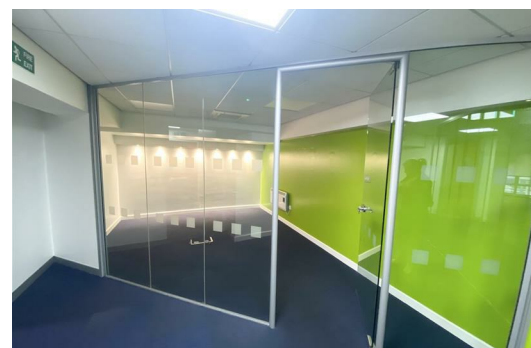
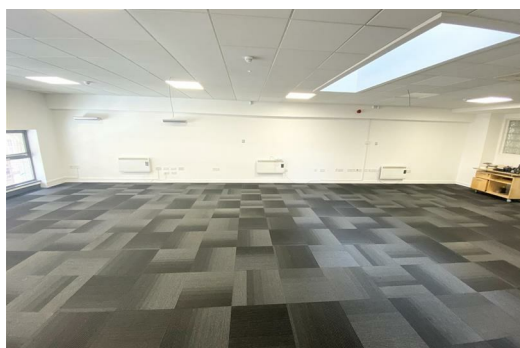
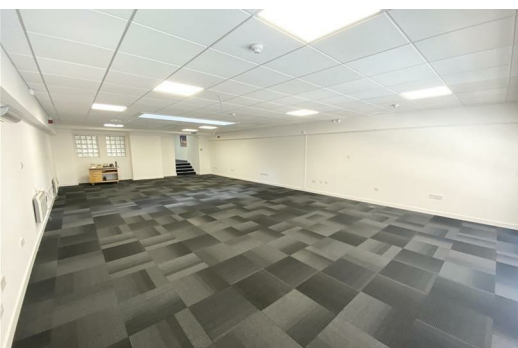
19 Hatton Garden, Liverpool, L3 2HA

£12,000 Per Annum

19 Hatton Garden is an attractive commercial First Floor unit on the Mezzanine Floor 143.25 sq.m (1,542 sq.ft), The premises are situated within an attractive terrace of commercial units within the former post office depot. Hatton Garden is situated close to all local amenities including Rail, Bus and Road Links the main retail and shopping district is located to the south of the building and is within easy walking distance.

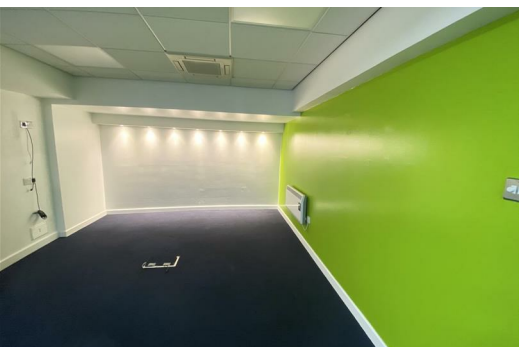
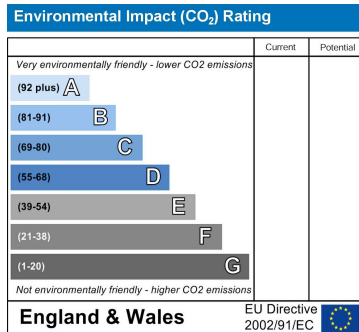
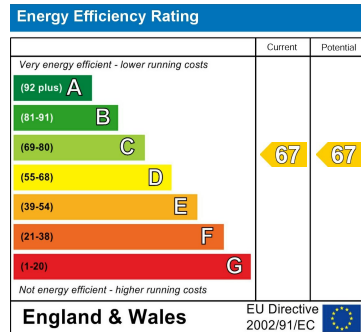
Lease length negotiable, please note all rent is variable and service charge payable

Please Contact the office to arrange a viewing 01519246000



Access is via the ground floor through and independent entrance directly off Hatton Garden, The office is fitted to a high specification and comprise:

- A glazed meeting room
- Suspended Ceilings
- LED Lighting
- High quality carpet tiling throughout
- Fully fitted kitchen
- Air conditioning throughout



Berkeley Shaw Estate Agents Limited.
Company No. 0784754

Berkeley Shaw Real Estate Limited.
Company No. 05206927

